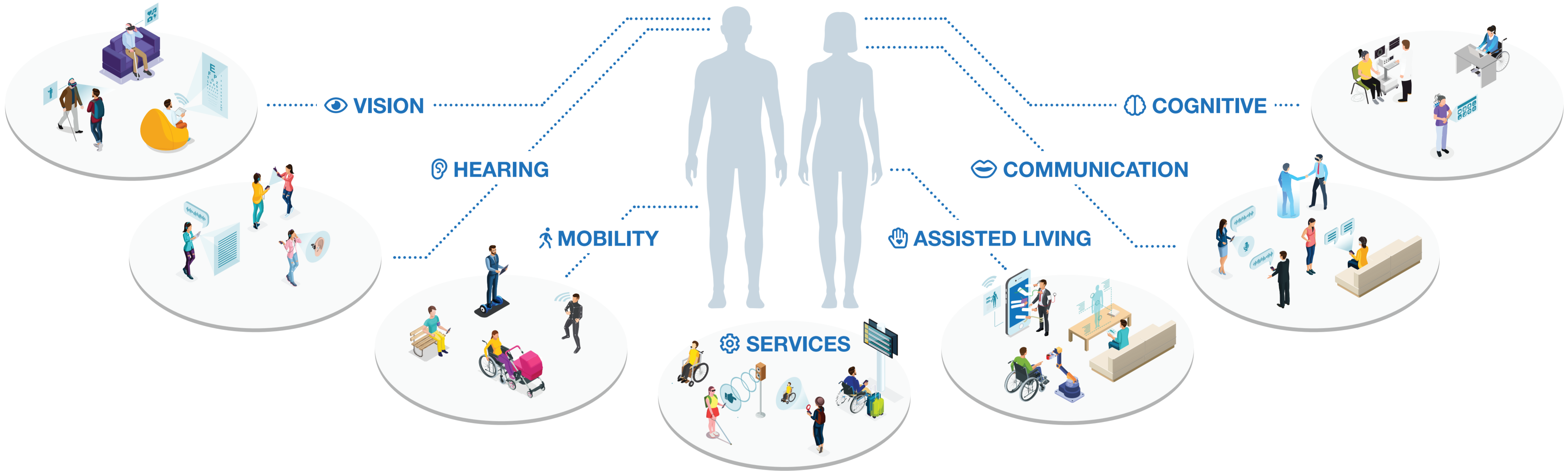


THERE ARE AROUND 100 COMPANIES IN ISRAEL IN THE ASSISTIVE TECH SECTOR

<p>VISION</p>	<p>HEARING</p>	<p>SERVICES</p>	<p>ASSISTED LIVING</p>	<p>COMMUNICATION</p>
----------------------	-----------------------	------------------------	-------------------------------	-----------------------------



	<p>MOBILITY</p>
--	------------------------

<p>COGNITIVE</p>

Start-Up Nation Central is the address for corporations, governments, and investors to connect with the Israeli tech ecosystem. Start-Up Nation Central catalyzes growth opportunities by bringing Israeli tech innovation to global business and societal challenges. Established in 2013 and headquartered in Tel-Aviv, Israel, Start-Up Nation Central is a not-for-profit organization funded by philanthropy.



Israeli Network of Life Enhancing Technologies

Just as an inlet is a narrow body of water acting as a conduit connecting a small body of water to a large body of water, INLET (the Israeli network of life enhancing technologies) acts as a conduit to bring the best life-enhancing technologies from Israel to people with disabilities and the elderly around the globe.



Arc Impact invests in promising startups in sectors of impact, including educational technology, workforce training, healthcare, and assistive technologies. Arc's strategy is to actively invest in early stage companies and to support sector development through philanthropy.